

SOS Multifunctional Wireless Doorbell

Package Includes

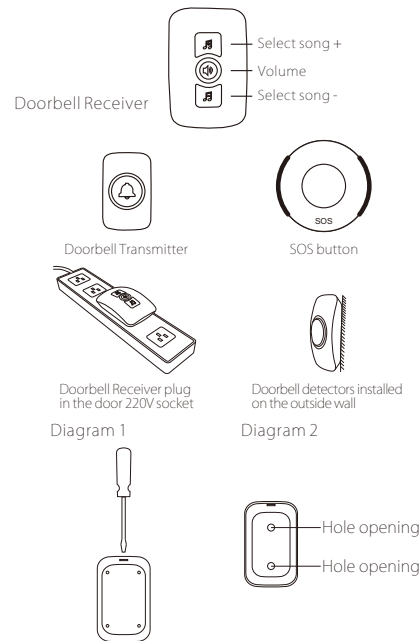
- 1 x plugin receiver
- 1 x transmitter button
- 1 x sos button
- 2 x screws
- 2 x anchors
- 1 x 3M sticker
- 1 x 12V/27A battery (transmitter button)
- 3 x 1.5V LR44 battery (SOS button)
- 1 x instruction manual

Product Introduction

SadoTech's SOS wireless doorbell adopts advanced wireless receiving and dispatching technology, contains a powerful microcomputer control system, has up to 32 music chimes, and has extremely reliable and stable performance. The doorbell connects to the transmitter through a wireless learning code technology and has the function of a doorbell, burglar alarm, and welcome alarm. SadoTech's SOS wireless doorbell is suitable for various places such as: villas, clubs, leisure centers, stores, hotels, homes, offices, meeting rooms, and etc.

Product Features

1. Supports multiple doorbell transmitters.
2. Suitable for any large spaces ie. villas, large offices, homes, and etc.
3. 32 music chimes.
4. All in one doorbell, burglar alarm, welcome alarm.
5. 4 volume adjustment levels.
6. Supports accessories of 1527/2262 encoding.
7. Able to pair up to 30 accessories without losing configuration upon power failure.
8. Pairable to accessories including: doorbell transmitters, remote control, motion sensor.



Installation Instruction

For Plugin Receiver: Just plug receiver into standard electric outlet in the room.

For Transmitter Button: Before installation, please test if the operating range is working and set music/chime if needed.

正面

尺寸：139*123MM
材质：100G 双铜
对折

Transmitter Installation Method 1: Screws/Anchors (Preferred install method)

1. After choosing the location of installation, use small flathead screwdriver to open front cover of transmitter. (see diagram 1)
2. Locate the two reserved wall mount openings on the backside of the transmitter button (see diagram 2) and create an opening with a screwdriver or electric drill.
3. Making holes in the wall with electric drill. Then insert the 2 expansion (anchors) bolts provided in the package. After that, screw on the back cover. Finally, attach back the front case. Be sure to align the battery mould design cover the right way to put it back on. Your installation is complete.

Transmitter Installation Method 2: Double Sided Sticker (optional install method)

(Please note that sticker will have poor adhesion, if put on dirty or uneven surface. Sunlight or rain will affect the adhesion and may cause the doorbell button to come off.)

1. After ensuring the right operating range. Please prepare install area with a clean cloth. Clean the flat area where you intend to install transmitter.
2. Tear off one side of the double-sided adhesive sticker and stick it to the underside of transmitter; tear off the other side and stick it onto the wall and press for 10 seconds.

Operating Instructions

I. Changing Music Chimes

1. Plug in the receiver
2. It will make a loud ding dong
3. Press the "select song +" button to choose a chime
4. If you want to go back press the "select song -" button

II. Volume Adjustment

1. Make sure to plug in the receiver
2. It will make a loud ding dong
3. Press the "volume" (middle) button to adjust volume
4. Note that there are 4 volume levels

III. Pairing Products

1. Plug in the receiver
2. It will make a loud ding dong
3. Press the "select song +" and "volume" button at the same time

4. The "volume" button should be lit up
5. Press the middle button on the transmitter
6. The transmitter should blink once
7. This indicates that the transmitter is now successfully paired
8. If you want to add more products just repeat steps 3-7
9. If the receiver flashes 3 times, no more products can be added
10. To exit out of pairing mode just press the "Volume" button.

IV. Unpair Products

1. Press the "select song +" and "volume" button at the same time
2. The "volume" button should be lit up
3. Then press and hold the "volume" button for about 3 seconds
4. The "volume" button should now blink 3 times
5. All the paired products have now been unpaired

Notes

1. Upon power failure, the receiver will go back to the first chime with the loudest volume level.
2. Caution: non-professionals should not attempt to repair the product.
3. If there are any problems, please contact the dealer.
4. This product is patent pending.

DISCLAIMER: This equipment is not designed or guaranteed to prevent any loss or injury. This Limited Warranty and Disclaimer of Liability constitutes the terms of sale and use of the System (and accessory) equipment, and if not with standing these terms of sale and use of the product, there should arise any liability on the part of SadoTech as a result of any cause whatsoever, regardless of whether or not such loss, damage, or personal injury was caused by or contributed to by SadoTech's negligence to any degree or failure to perform any obligation or strict products liability, such liability will be limited to an amount paid by the Purchaser to SadoTech for the product, or to the sum of \$50.00, whichever is to be decided at the sole discretion of SadoTech.

For support contact: support@sadotech.com or call 1-800-203-0388.

Proudly designed in the USA and manufactured in China.

反面