

Item No.: FB-531P

Features:

1. 32 sounds with 24 polyphonic.
2. LED indicator in the Receiver.
3. Speaker in the Receiver with volume setting.
4. 150M operating radius in the open air.
5. Self-learning technology avoid interference.
6. Bell push is waterproof IP44.

Installation

The bell push can be mounted on door frame.
The chime can be put on table or put to the strip.

Transmitter unit

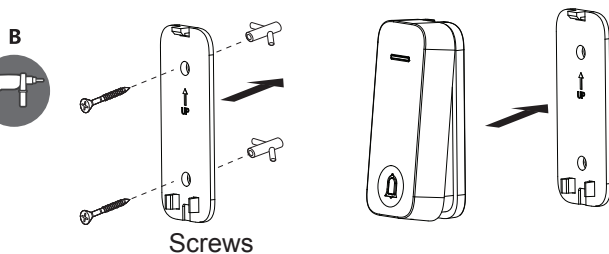
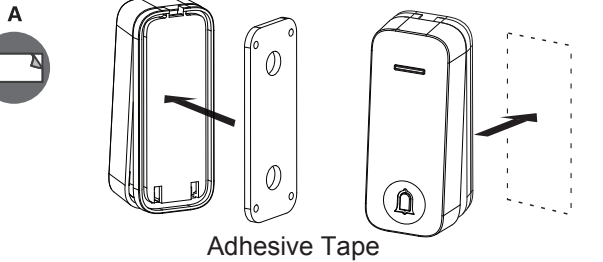
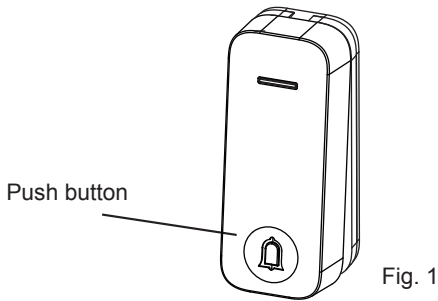


Fig. 2

Receiver unit

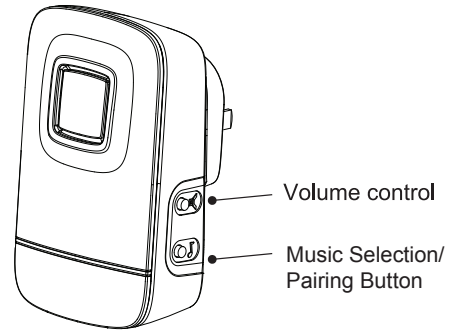


Fig. 3

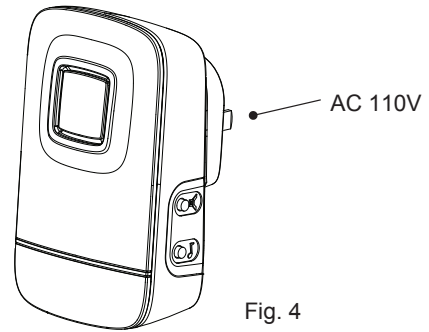


Fig. 4

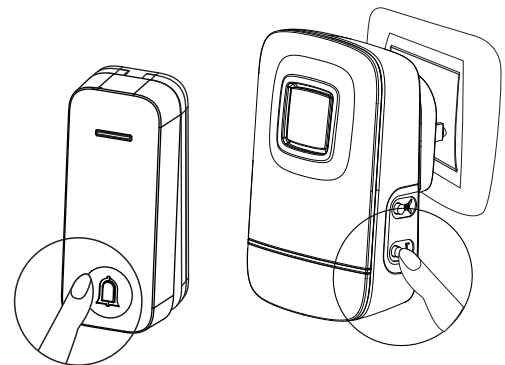


Fig. 5

How to Pairing

- Note: This package is already paired, if there is any disconnection or short range, please follow below setting.
- Hold the receiver's pairing button for 3 seconds until the receiver has "Ding-Ding" sound. Then press the kinetic bell push, then the receiver has "Ding" sound means pairing between the kinetic bell push, and receiver is completed. The receiver will have another "Ding-Ding" sound to exit pairing mode.